

DEVELOPMENT

MDA

AGENCY



CONSTRUCTION OF RECREATION AREAS "BLUE CAREER"



ABOUT THE PROJECT

THIS PROJECT IS THE ORGANIZATION OF RECREATION ZONES IN THE REGION OF THE UNIQUE WATER OBJECT "BLUE CAREER", PROPOSES THE CONSTRUCTION OF VACATION HOMES, THE BUILDING WITH A BANQUET HALL AND KITCHEN, BATHHOUSES, GAZEBOS, SHEDS, BOATS, CATAMARANS, BRIDGES FOR FISHING. THE PRESENCE OF ROUGH TERRAIN WITH DIFFICULT TERRAIN IMPLIES THE ARRANGEMENT OF TRAILS FOR ORGANIZING SPORTS AND EXTREME RECREATION.

PROJECT OBJECTIVE:

Creation of recreation areas, provision of recreational and accommodation services, development of local and inbound tourism in the territory of Klimovichichi district.

Location of the project: The Republic of Belarus, Mogilev Region, Klimovichichi district.

Investment: 2 500 000 USD

Contacts:

213633, Klimovichichi, 50 years of Great October square, 2
+375 (02244) 7-78-48, +375 (02244) 7-78-01,
+375 (02244) 7-79-52 E-mail: rik@klimovichichi.gov.by



ABOUT PROJECT

ADVANTAGES OF PROJECT



**THERE IS A FREE
LAND PLOT OF 1 HA**



**THE PRESENCE OF
A UNIQUE WATER
FEATURE «BLUE QUARRIES»**



**DISTANCE
TO REPUBLICAN ROADS
R-75 – 0.5 KM, R-43 – 25 KM,
TO THE RAILWAY STATION
KLIMOVICHI– 3.7 KM**

Photographer Andrey Shokhin

PREFERENTIAL TREATMENT: 💰

INVESTMENT AGREEMENT:



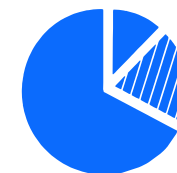
- ✓ provision of a land plot without an auction
- ✓ exemption from payment of customs duties and VAT on the import of technological equipment

SMALL TOWNS AND COUNTRYSIDE:

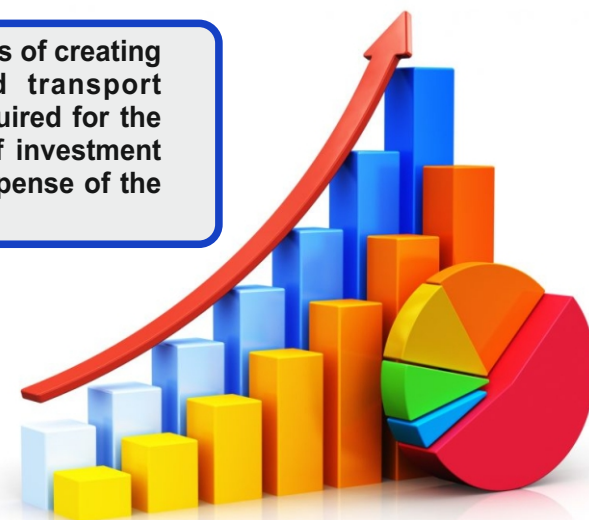


- ✓ exemption from import duties
- ✓ exemption from paying state fees for issuing a license
- ✓ exemption from income tax, property tax, income tax

SOUTH-EAST DISTRICT OF MOGILEV REGION:



- ✓ exemption from targeted fees and tax incentives
- ✓ reimbursement up to 20% of the cost of capital costs for an investment project
- ✓ financing the costs of creating engineering and transport infrastructure required for the implementation of investment projects at the expense of the budget



KLIMOVICH DISTRICT

ABOUT THE DISTRICT



25.2 thsd
people



1542 sq.km
area of
the district

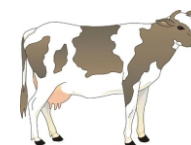
56,5 thsd HA
agricultural land
area

37,7 thsd HA
arable land
area

The economic development of the district based on agricultural production. The main directions are:



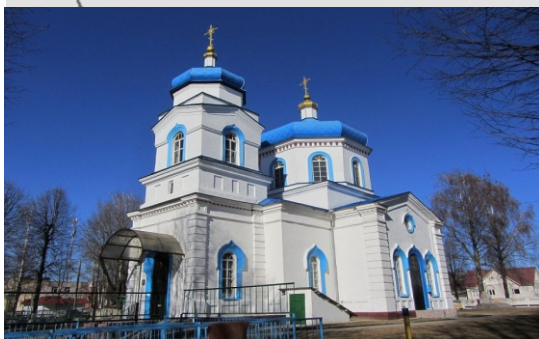
DIARY
PRODUCTION



CATTLE
RAISING



FORAGE
HARVESTING



PROSPECTIVE INVESTMENT PROJECTS OF MOGILEV REGION



+375 222 74 61 91
+375 44 582 28 18



agencymogilev@ya.ru



Belarus, Mogilev,
boulevard Yubileyniy, 21

THE AGENCY IS READY TO HELP FOREIGN INVESTORS INTERESTED UN DOING BUSINESS IN BELARUS

- Presentation information on investment opportunities, preferential regimes and benefits, industries, legislation
- Provision of current information on investment projects
- Selection and provision of information on options for land and premises
- Search for potential partners for the implementation of the investment project; organization of meetings, negotiations with potential partners to establish

and support for the investor during the negotiations

- Organization of visits to Mogilev Region (development of a program of stay, assistance in obtaining a visa)
- Representation the interests of the investor in negotiations with government officials on the implementation of investment projects, as well as on improving business practices in Mogilev Region



+375 222 74 61 91
+375 44 582 28 18



agencymogilev@ya.ru



Belarus, Mogilev,
boulevard Yubileyniy, 21

- The following major benefits related to the implementation of the project are provided in connection with the conclusion of the investment agreement



- VAT deduction
- Exemption from VAT
- Land plots are granted for rent without auction

INVESTMENT AGREEMENT

- The following benefits related to the implementation of the project are provided in connection with the location of the land plot



- 0% income tax VAT
- Exemption from custom import duties
- Exemption from payment of the state fee for issuing a license

SMALL TOWNS AND RURAL AREAS

- The following benefits granted to the investors for implementation of the project in the South-Eastern region of Mogilev Region



- 10% income tax
- 24% pension insurance
- Financing the costs of creating engineering and transport infrastructure

SOUTH-EASTERN REGION OF MOGILEV REGION



+375 222 74 61 91
+375 44 582 28 18



agencymogilev@ya.ru



Belarus, Mogilev,
boulevard Yubileyniy, 21

WELCOME TO MOGILEV REGION!



+375 222 74 61 91
+375 44 582 28 18



agencymogilev@ya.ru



Belarus, Mogilev,
boulevard Yubileyniy, 21